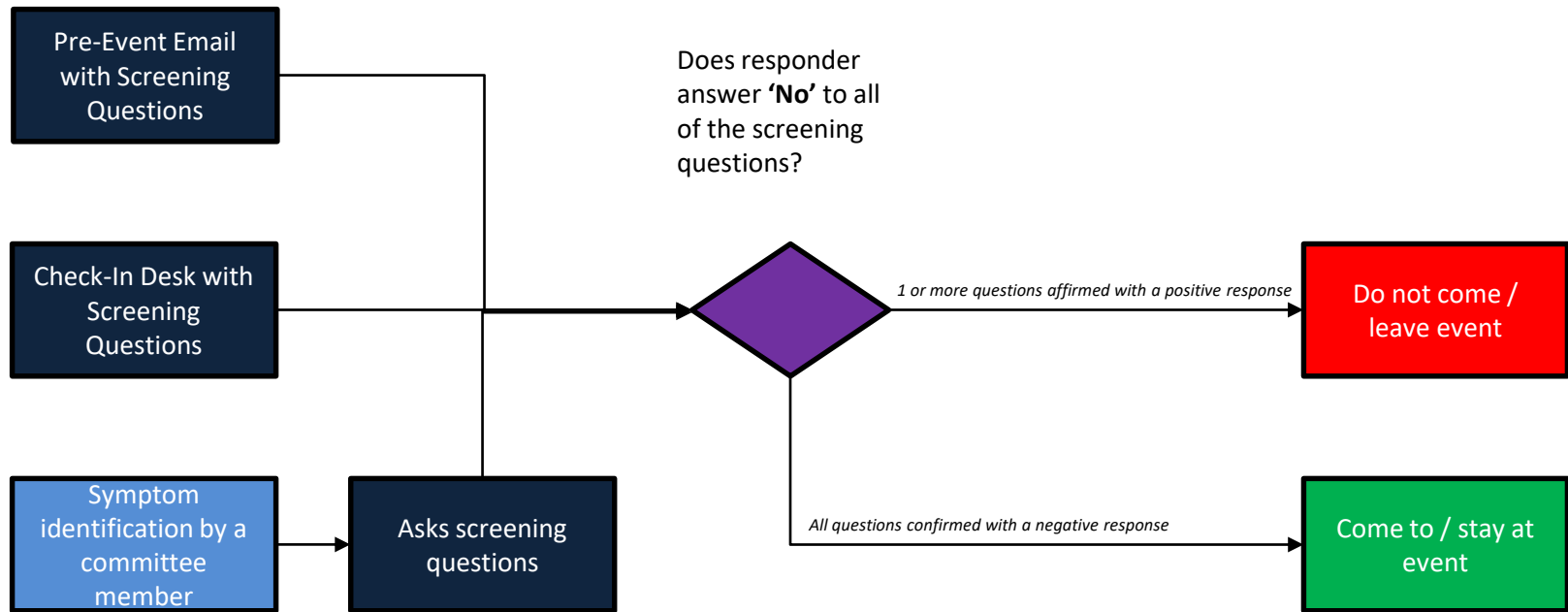


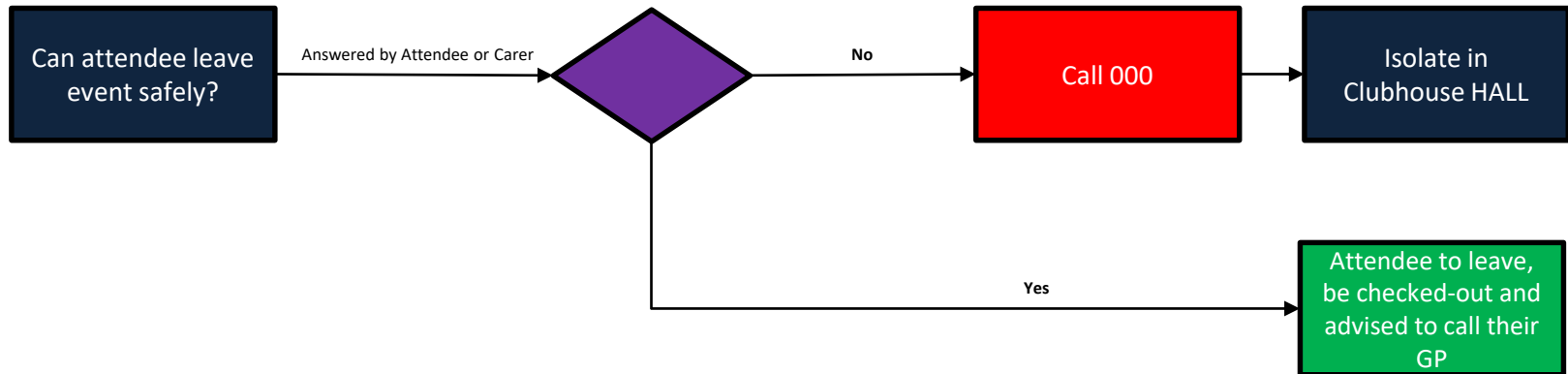
Our intent is for all attendees on the day to present fit & healthy for our races. Under our COVID Safe plan, committee members will have the authority to inform attendees to leave the event following the process below.



Screening Questions

1. Are you required to be in self-isolation/self-quarantine?
2. Have you been diagnosed with COVID-19 or are currently awaiting a result of a test for COVID-19?
3. To the best of your knowledge, have you been in close contact with a person who is a suspected or confirmed case of coronavirus (COVID-19) in the past 14 days.
4. Are you feeling unwell, or have had a fever, cough, sore throat, shortness of breath or other cold/flu-like symptoms within the last 72 hours?

The below flowchart maps our process to manage unwell participants (attendees).

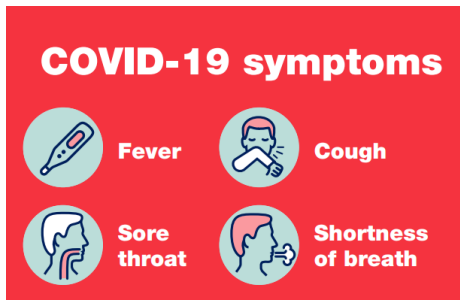


Club facilities that can be used to manage symptomatic participants

Should the attendee found to be symptomatic be unable to leave the event safely by themselves or with a carer, the COVID Officer, or delegate from the committee, will be responsible in isolating the participant in the **HALL** area until medical assistance has arrived.

We want to ensure that we keep all our attendees safe. If you answer 'yes' to any of the following questions, you will not be able to attend the event.

- 1. Are you required to be in self-isolation/self-quarantine?**
- 2. Have you been diagnosed with COVID-19 or are currently awaiting a result of a test for COVID-19?**
- 3. To the best of your knowledge, have you been in close contact with a person who is a suspected or confirmed case of coronavirus (COVID-19) in the past 14 days.**
- 4. Are you feeling unwell, or have had a fever, cough, sore throat, shortness of breath or other cold/flu-like symptoms within the last 72 hours?**



We want to ensure that we keep all our attendees safe. The following controls are in place to ensure safety in our canteen facility.

- Increase the frequency of cleaning and sanitising – surfaces cleaned thoroughly with water and detergent after each event.
- Maintain frequent hand washing – marshals are informed to wash hands when entering and leaving the canteen; after going to the bathroom; and after touching your face or hair.
- Ensure appropriate glove use – gloves provided handling food and drinks.
- Removal handling of food and food preparation – all food items sold will be pre-packaged off-the-shelf.
- Use of tongs – negated as all food items sold will be pre-packaged off-the-shelf.
- Availability of water, tea & coffee – no self-serve water, tea or coffee will be available. Water, tea & coffee to be requested as per other canteen items. Drink item to be prepared by canteen volunteer and handed back in a disposable cup.
- Maintain social distancing measures - as per Kembla Joggers COVID plan. Maximum 2 volunteers inside canteen at one time.
- Have hand sanitiser and/or hand washing stations – at the inside of the canteen external entry door for volunteers. Internal access door to be locked at all times.
- Create a barrier – items only provided over the canteen counter which has our security guards in place.
- Control risk handling of money – by all items being in off-the-shelf wrappers and by use of sanitisation station.
- Introduce staggered collection lines – a single-file line with 1.5m spacing will be implemented at the canteen.

Volunteers who do not pass screening questions will not be present at the event to be in the canteen. All people to the event must check-in where they will be asked to confirm their screening questions.

If Volunteer Canteen staff develop a cold, cough or flu-like symptoms they should make themselves known to the COVID safety officer & leave immediately.

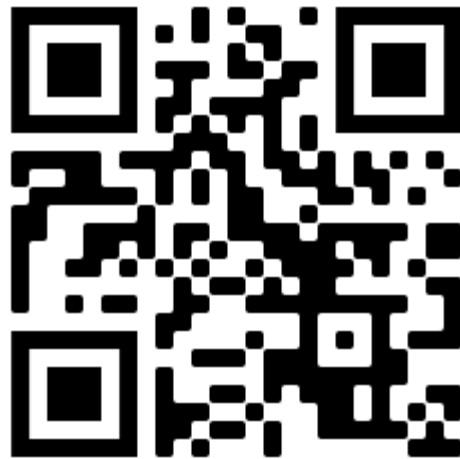


**Please proceed this way to
event check-in & maintain
physical distancing.**



**Stay 1.5 metres
or 2 big steps
away from other
people.**

Scan the QR code or follow the link to get your Check-In ticket.



<https://guestli.st/655356>

Legend

Locked Door

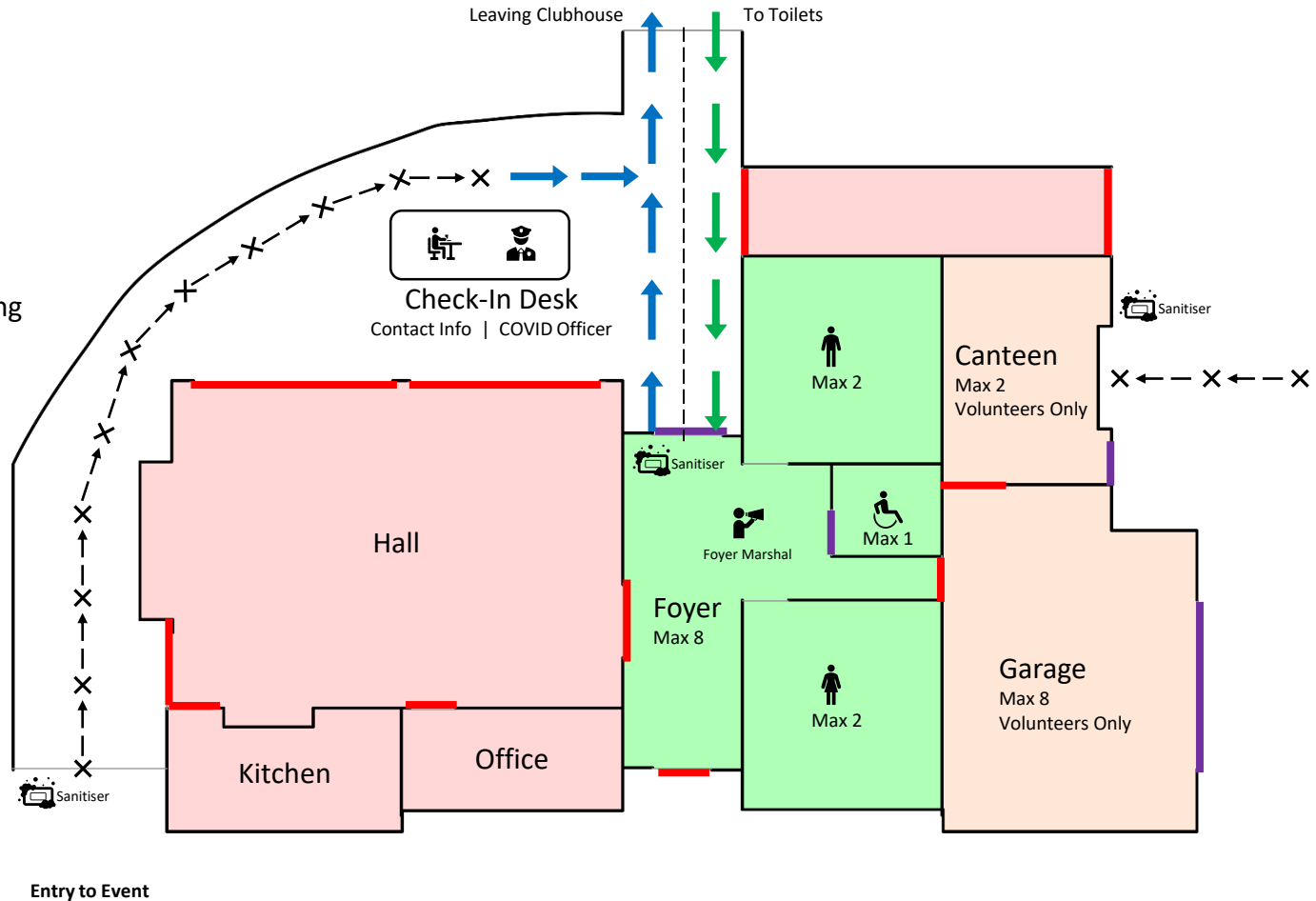
Supervised Door

Physical Distancing Markers (1.5m)

Toilet Inbound

Clubhouse Outbound

Sanitiser



Legend

Locked Door

Supervised Door

Physical Distancing Markers (1.5m)

Toilet Inbound

Clubhouse Outbound

Sanitiser

